



CHHCZ
浙江创得机械



专业生产滑差轴/气胀轴/铝导辊/气胀套/机械夹头

Specializing in the production of slip shaft / inflatable shaft / aluminum guide roller / inflatable sleeve / mechanical chuck



浙江创得机械有限公司

Zhejiang chuande Machinery Co., Ltd

400-118-1358/138-1818-5368

浙江省瑞安市莘塍工业区(浙江创得机械有限公司)

www.chhcz.com

CHHCZ
浙江创得机械



(官网二维码)

浙江创得机械有限公司

Zhejiang chuande Machinery Co., Ltd

专业制造滑差轴/气胀轴/铝导辊

Professional manufacturer of slip shaft / inflatable shaft / aluminum guide roller

细心发现 | 专心专注 | 用心制作

浙江创得机械

Zhejiang chuangde Machinery Co., Ltd

专业制造滑差轴/气胀轴/铝导辊

创得简介

COMPANY INTRODUCTION

浙江创得机械有限公司座落于机械生产基地浙江省瑞安市，工厂总占地面积6亩。现在已有员工约51人，研发技术人员2人。是一家致力于专业生产滑差轴、滑差环、气胀轴、气胀套、铝导辊、压花辊、包胶辊、安全卡盘、机械夹头等机械配件的行业，经验丰富。产品广泛用于：分切机、涂布机、包装机、制袋机、覆膜机、印刷机、复合机、造纸机械等各种机械配套的使用。产品结构合理，造型美观，质量可靠，价格合理，交货及时，可为广大新老用户要求定制各种机械配件产品。

在市场竞争激烈的今天，我们坚持“诚信为本，务实创新”的原则，紧跟市场步伐，稳扎稳打，不断深入企业改革，以先进的制造技术，完善的客户体系，不断提高产品质量和档次，为市场制造更优质的产品。产品销往全国各地，并出口美国、日本、马来西亚、印度、比利时、东南亚等十多个国家地区，以价格品质和信用的优势，赢得客户的青睐。

自企业成立以来，专注研究开发各种机械配件，质量不断得到提高，由于“价实质优，服务优良”，长期以来产品以其质量的可靠性，运行的稳定性和使用的经济性，赢得了广大新老用户的好评！竭诚欢迎海内外新老客户来电、来函及光临指导合作，互利共赢、共创辉煌；希望我们的服务能为您的事业辉煌尽一份心力。

Zhejiang chuangde Machinery Co., Ltd. is located in Rui'an City, Zhejiang Province, the machinery production base. The factory covers a total area of 6 mu. Now there are about 51 employees and 2 R & D technicians. It is an industry dedicated to the professional production of slip shafts, slip rings, inflatable shafts, inflatable sleeves, aluminum guide rollers, embossing rollers, rubber covered rollers, safety chucks, mechanical collets and other mechanical accessories, with rich experience. Products are widely used in: slitting machine, coating machine, packaging machine, bag making machine, laminating machine, printing machine, laminating machine, paper machinery and other machinery supporting the use. The product has reasonable structure, beautiful appearance, reliable quality, reasonable price and timely delivery. It can customize various mechanical accessories for new and old users.

In today's fierce market competition, we adhere to the principle of "integrity-based, pragmatic and innovative", keep up with the pace of the market, steadily, constantly deepen enterprise reform, and constantly improve product quality and grade with advanced manufacturing technology and perfect customer system, so as to make better products for the market. The products are sold all over the country and exported to more than ten countries and regions, such as the United States, Japan, Malaysia, India, Belgium, Southeast Asia, etc. with the advantages of price, quality and credit, they have won the favor of customers.

Since the establishment of the enterprise, it has focused on the research and development of various mechanical parts, and the quality has been continuously improved. Due to "excellent price and excellent service", the products have won the praise of the majority of new and old users for their quality reliability, stability of operation and economy of use for a long time! We sincerely welcome new and old customers at home and abroad to call, write and visit for guidance and cooperation, mutual benefit and win-win results, and create brilliance together; I hope our service can make a contribution to your brilliant career.



滑差环系列

DIFFERENTIAL RING



滚珠滑差环

WWW.CHCZ.COM
浙江创得机械有限公司



2寸双珠(25宽)



3寸单珠(10宽)



3寸单珠(25宽)



3寸双珠(20宽)



3寸双珠(25宽)



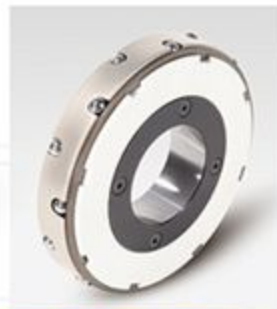
3寸双珠(30宽)



3寸双珠(35宽)



3寸双珠(50宽)



6寸双珠(30宽)

滚柱滑差环

WWW.CHCZ.COM
浙江创得机械有限公司



3寸滚柱(10宽)



3寸滚柱(25宽)



3寸滚柱(25宽)



3寸滚柱(30宽)



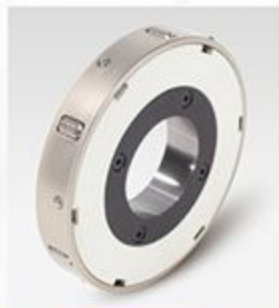
3寸滚柱(30宽)



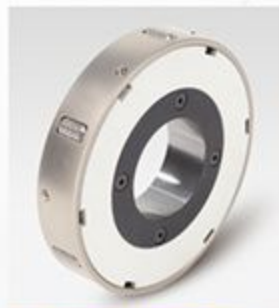
3寸滚柱(35宽)



5寸滚柱(30宽)



6寸滚柱(25宽)



6寸滚柱(30宽)

键式滑差环

WWW.CHCZ.COM
浙江创得机械有限公司



3寸键式(10宽)



3寸键式(10宽)



3寸键式(10宽)



3寸键式(15宽)



3寸键式(20宽)



3寸键式(25宽)



3寸键式(25宽)



3寸键式(25宽)



3寸键式(30宽)

键式滑差环

WWW.CHHCZ.COM
浙江创得机械有限公司



3寸键式(30宽)



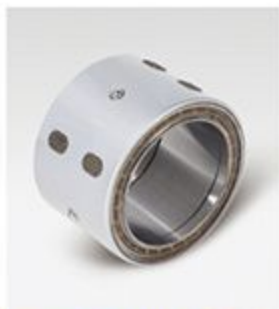
3寸键式(40宽)



3寸键式(50宽)



3寸键式(50宽)



3寸键式(50宽)



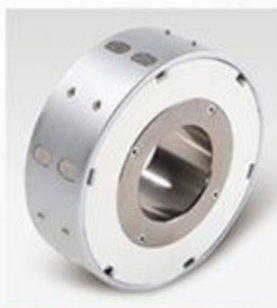
3寸键式(50宽)



3寸键式(50宽)



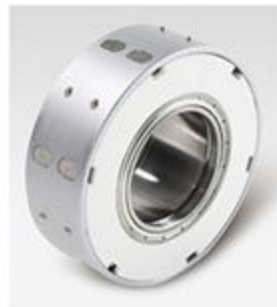
3寸键式(50宽)



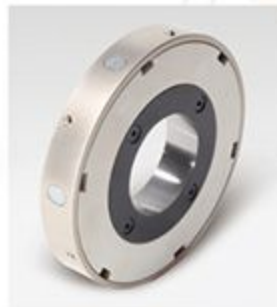
6寸键式(50宽)

滑差轴原理

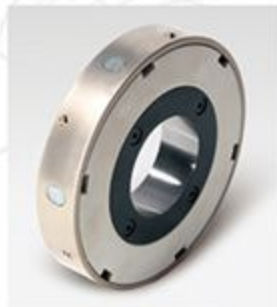
WWW.CHHCZ.COM
浙江创得机械有限公司



6寸键式(50宽)



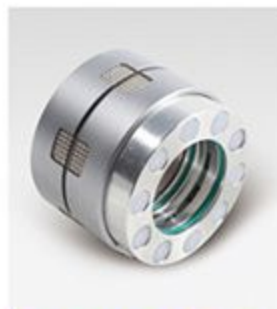
6寸键式(25宽)



6寸键式(30宽)



3寸西村(41.5宽)



3寸键式(54宽)



3寸东伸(50宽)



新式滑差环(50宽)

滑差轴系列

DIFFERENTIAL SHAFTS



滑差轴应用

DIFFERENTIAL SHAFT

APPLICATION SCENARIO

WWW.CHCZ.COM
浙江创得机械有限公司



双气路滑差轴 / DOUBLE AIR PATH SLIP SHAFT

双气路滑差轴集气压和调节气压分离，卷料张力恒稳，端面超超平整，控制操作性最佳，自动装卸卷，适用于锂电池极片、铜箔、铝箔、电池隔膜、超低压PET膜、电子膜卷取等

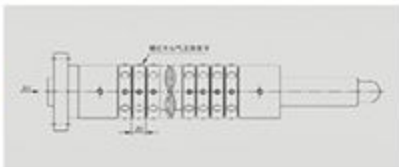
The locking air pressure and regulating air pressure of the double air path shaft are separated, the coil tension is constant, the end face is super flat, the control operation performance is excellent, and the coil is loaded and unloaded automatically. It is suitable for the winding of lithium battery pole piece, copper foil, aluminum foil, battery diaphragm, ultra-low tension PET film, electronic film, etc.



中心气压滑差轴 / CENTRAL AIR PRESSURE SLIP AXIS

从电空比例阀输出气压到轴心气腔（簧），施加压力给滑差环，产生相应的摩擦转矩，张力范围连续可控。

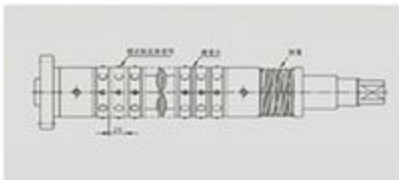
Output air pressure from the electro-pneumatic proportional valve to the axial air chamber (spring), apply pressure to the slip ring, generate corresponding friction torque, and the tension range is continuously controllable.



侧压滑差轴 / LATERAL PRESSURE SLIP SHAFT

轴向传递压力将各个滑差环压紧，芯轴旋转过程中打滑偏转产生摩擦转矩，优点是可产生较大扭力，实现大转矩、大摩擦张力收卷。

The axial transmission pressure compresses the end face of each slip ring, and the slip deflection produces friction torque during the rotation of the mandrel. The advantage is that it can produce large torque and realize winding with large torque and large friction tension.



滚珠滑差轴

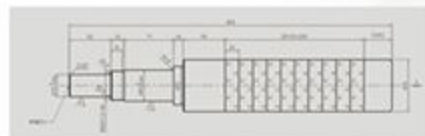
BALL TYPE DIFFERENTIAL SHAFT

WWW.CHCZ.COM
浙江创得机械有限公司



- 3"主体外径=φ75.5, 动作最大直径=φ77.8/max.
- 大珠环最大胀起直径φ78.2/max.
- 适用纸管内径φ76.2±0.2.
- 标准宽度25mm, 其他.
- 单珠环10, 15, 20, 25mm.
- 双珠环15, 20, 25, 30, 35, 40, 45, 50mm.
- 标准内径φ60, 其他尺寸可配合轴心制作.
- 6"主体外径=φ151, 最大动作直径=φ155.5/max.
- 适用纸管内径=φ152.4±0.2.
- 标准宽度35, 45mm, 其他吃尺寸可配合轴芯制作.
- 其他外径尺寸可依客户要求设计.

- 3" outer diameter of main body= φ 75.5, maximum operating diameter= φ 77.8/max.
- Maximum bulge diameter of big bead ring φ 78.2/max.
- Applicable paper tube inner diameter φ 76.2±0.2.
- Standard width 25mm, others.
- Single bead ring 10, 15, 20, 25mm.
- Double bead rings 15, 20, 25, 30, 35, 40, 45, 50mm.
- Standard inner diameter φ 60. Other sizes can be made with the axis.
- 6" body outer diameter= φ 151, maximum action diameter= φ 155.5/max.
- Applicable paper tube inner diameter= φ 152.4±0.2.
- The standard width is 35, 45mm, and other sizes can be made with the shaft core.
- Other outer diameter dimensions can be designed according to customer needs.



【设计图纸】

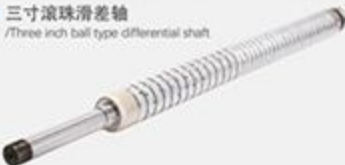
两寸滚珠滑差轴

/Two inch ball type differential shaft



三寸滚珠滑差轴

/Three inch ball type differential shaft



滑差轴展示

DIFFERENTIAL SHAFT

PRODUCT INTRODUCTION

WWW.CHCZ.COM
浙江创得机械有限公司



三寸滚珠滑差轴

/Three inch ball type differential shaft



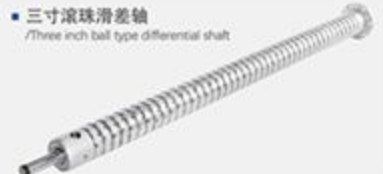
三寸滚珠滑差轴

/Three inch ball type differential shaft



三寸滚珠滑差轴

/Three inch ball type differential shaft



三寸滚珠滑差轴

/Three inch ball type differential shaft



滚柱滑差轴

ROLLER TYPE DIFFERENTIAL SHAFT

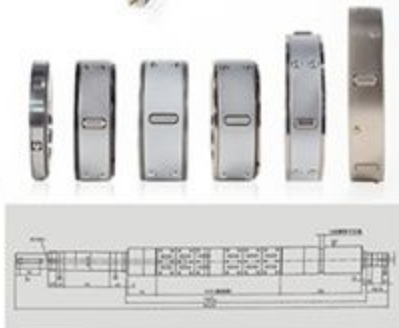
WWW.CHHCZ.COM
浙江创得机械有限公司



- 3"主体外径 $\phi 75/75.5$,最大动作直径 $\phi 79/\max$.
- 适用纸管内径 $\phi 76.2 \pm 0.2$.
- 最小宽度10mm,标准15、20、25、30、35、40、50mm,其他标准可依客户需求设计。
- 标准内径 $\phi 50$,小滚柱环 $\phi 60$,其他尺寸可配合轴芯制作。
- 1"主体外径 $\phi 25$,最大动作直径 $\phi 26.2$.
- 适用管芯内径 $\phi 25.4 \pm 0.2$.
- 宽度20、25、30mm。
- 内径 $\phi 12$,此尺寸已达到最小外径。
- 6"主体外径 $\phi 152.4 \pm 0.2$.
- 标准宽度20、25、30、35、40、50mm,其他可依客户需求设计。
- 标准内径 $\phi 60$,其他尺寸可配合轴芯制作。



- 3" outer diameter of main body $\phi 75/75.5$, maximum action diameter $\phi 79/\max$.
- Applicable paper tube inner diameter $\phi 76.2 \pm 0.2$.
- The narrowest width is 10mm, and the standards are 15, 20, 25, 30, 35, 40, 50mm. Other standards can be designed according to customer needs. Standard inner diameter $\phi 50$. Small roller ring $\phi 60$. Other sizes can be made with the shaft core.
- 1" outer diameter of main body $\phi 25$. Maximum operating diameter $\phi 26.2$.
- Applicable inner diameter of pipe core $\phi 25.4 \pm 0.2$.
- Width 20, 25, 30mm.
- Internal diameter $\phi 12$. This dimension has reached the minimum outer diameter.
- 6" body outer diameter $\phi 152.4 \pm 0.2$.
- The standard width is 20, 25, 30, 35, 40, 50mm, and others can be designed according to customer needs.
- Standard inner diameter $\phi 60$. Other sizes can be made with the shaft core.



【设计图纸】

滚柱滑差轴
/Roller type differential shaft



滚柱滑差轴
/Roller type differential shaft



滑差轴展示

DIFFERENTIAL SHAFT

PRODUCT INTRODUCTION

WWW.CHHCZ.COM
浙江创得机械有限公司



滚柱滑差轴
/Roller type differential shaft



滚柱滑差轴
/Roller type differential shaft



滚柱滑差轴
/Roller type differential shaft



滚柱滑差轴
/Roller type differential shaft



西村滑差轴

XICUN TYPE DIFFERENTIAL SHAFT

WWW.CHHCZ.COM
浙江创得机械有限公司



- 西村式滑差环配置金属薄片
- 3"滑差环(标准环)主体外径 $\phi 75.5$,最大动作max直径 $\phi 77.9/\text{max}$.
- 适用管芯(纸管、铝管、塑料管或其他材料复合管芯)内径 $\phi 76.2 \pm 0.2$ 非标准管芯内径,滑差环需特殊定制。
- 内径 $\phi 45, 49, 50$.
- 单向滑差环,标准宽度40mm,其他宽度:19, 20, 25, 30, 35, 40, 45, 50mm任选活塞标准数量为8个,根据所需张力大小可以做成6个、12个、16个。
- 8个活塞的滑差环,适用于包装薄膜和一般薄膜的分切,12个活塞的滑差环,适用于锂电池极片、隔膜的分切,16个活塞的滑差环,适用于动力电池宽幅铝箔、铝箔分切。
- 双向滑差环最窄宽度42mm,其他宽度:48, 51, 52mm任选。适用于动力电池极片的分切,特别分切窄幅的铝箔、铝箔(12, 13, 15, 17mm)。
- 超低张力滑差环宽度为50mm,可实现极低的摩擦张力控制,应用于超薄(10 μ)PET薄膜、电子膜的分切。
- 低张力滑差环标准宽度40mm,其他宽度:30, 35, 40, 45mm任选。活塞标准数量为8个。
- 新推出双气路西村式滑差轴,实现锁紧气压和调节气压分离,从极低张力到大张力宽范围的连续精准控制。
- 新型西村式滑差轴:加助推轮西村轴/加滚动圆珠的西村轴,大直径收卷、卸卷容易实现。
- 其他外径尺寸可依客户需要设计。
- 滑差环薄片有两种:金属薄片和胶膜片



【滑差环拆解图】



【设计图纸】

西村式滑差轴 Xicun type differential shaft



西村式滑差轴 Xicun type differential shaft



键式滑差轴

KEYED TYPE DIFFERENTIAL SHAFT

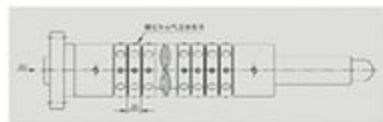
WWW.CHHCZ.COM
浙江创得机械有限公司



- 键式滑差环分为长方形金属键和椭圆形金属键两种。
- 3"主体外径 $\phi 75$,最大动作直径 $\phi 77.8/\text{max}$.
- 适用管芯内径: $\phi 76.2 \pm 0.2$ (纸管、铝管、塑料管或其他材料复合管芯)。
- 标准宽度:10, 15, 20, 25, 30, 35, 40, 50mm,其它可依客户需要设计
- 标准内径: $\phi 50$,其它尺寸配合轴芯制作。
- 6"主体外径 $\phi 151$,动作最大直径 $\phi 155.5/\text{max}$.
- 适用管芯内径: $\phi 152.4 \pm 0.2$ (纸管、铝管、塑料管或其他材料复合管芯)。
- 标准宽度:25, 30, 35, 45, 50mm,其它可依客户需要设计。
- 标准内径: $\phi 60$,其它尺寸配合轴芯制作。



- Key slip rings are divided into rectangular metal keys and oval metal keys.
- 3"outer diameter of main body $\phi 75$, maximum operating diameter $\phi 77.8/\text{max}$.
- Applicable inner diameter of pipe core: $\phi 76.2 \pm 0.2$ (paper tube, aluminum tube, plastic tube or other material composite tube core).
- Standard width: 10, 15, 20, 25, 30, 35, 40, 50mm, others can be designed according to customer needs.
- Standard inner diameter: $\phi 50$. Other sizes are made with the shaft core.
- 6"body outer diameter $\phi 151$, maximum operating diameter $\phi 155.5/\text{max}$.
- Applicable inner diameter of pipe core $\phi 152.4 \pm 0.2$ (paper tube, aluminum tube, plastic tube or other material composite tube core).
- Standard width: 25, 30, 35, 45, 50mm, others can be designed according to customer needs.
- Standard inner diameter: $\phi 60$. Other sizes are made with the shaft core.



【设计图纸】

键式滑差轴 Keyed type differential shaft



键式滑差轴 Keyed type differential shaft



气胀轴系列

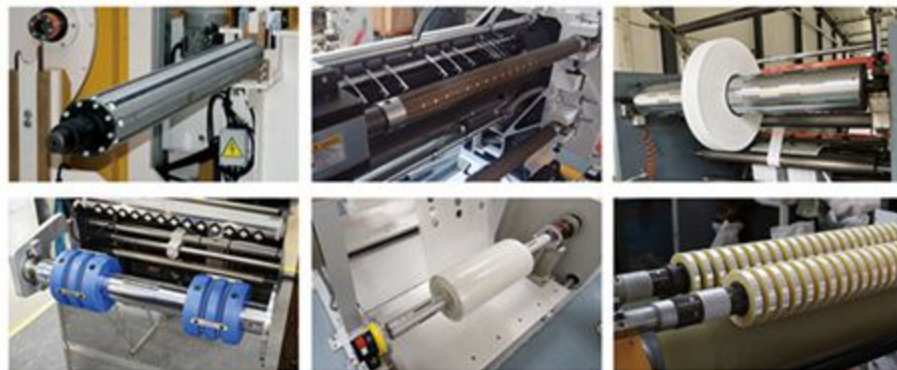
AIR SHAFTS



气胀轴应用

AIR SHAFT

APPLICATION SCENARIO



键式气胀轴 / KEY INFLATABLE SHAFT

凸键式气胀轴为键式气胀轴，主体采用优质钢管，表面镀铬，铝制凸键，伸缩自如，配置优质橡胶内胎和快速充排气嘴，密封效果好，可拆卸轴头，检修方便使用寿命长。

The convex key type inflatable shaft is a key type inflatable shaft. The main body is made of high-quality steel pipe, the surface is plated with hard chromium, and the aluminum convex key is flexible. It is equipped with high-quality rubber liner and quick filling and exhaust nozzle, with good sealing effect, removable shaft head, convenient maintenance and long service life.



瓦片式气胀轴 / TILE INFLATABLE SHAFT

采用铝合金瓦片，膨胀灵活；配置优质橡胶内胎与快速充排气嘴，密封效果好，使用寿命长；可拆卸轴头，维修方便。

Aluminum alloy tile is adopted, which is flexible in expansion and contraction. Equipped with high-quality rubber liner and quick air filling and exhaust nozzle, it has good sealing effect and long service life. Removable shaft head, easy maintenance.



通键式气胀轴 / THROUGH KEY INFLATABLE SHAFT

表面五爪键条，分为橡胶/铝条/PU等，使用生产各类纸芯管，适用于高转速，高载重，并能调整材料偏移，等分均匀，平衡性好，膨胀力更强。

The surface five claw key strip is divided into rubber / aluminum strip / PU, etc. It is used to produce all kinds of paper cone tubes. It is applied to high speed and high load, and can adjust the material offset. It has uniform division, good balance and stronger expansion force.



表面气囊气胀轴 / SURFACE INFLATABLE SHAFT

由轻质铝合金、碳纤维管组成，膨胀部件均匀分布于轴径表面，整轴的平直度和平衡度好，同心度高，特别适用于机器高速运转。

It is composed of light aluminum alloy and carbon fiber pipe. The expansion parts are evenly distributed on the shaft diameter surface. The whole shaft has good flatness, balance and high concentricity. It is especially suitable for high-speed operation of the machine.



键式气胀轴

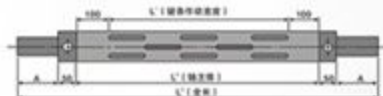
KEY TYPE AIR SHAFT

WWW.CHCZ.COM
浙江创得机械有限公司

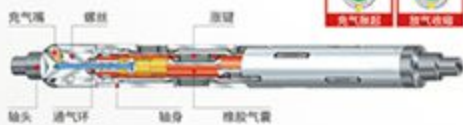


- 键式气胀轴又称凸键式气胀轴，此类气胀轴主体采用优质钢管，表面镀铬，铝制凸键，伸缩自如，配置优质橡胶内胆和快速充气嘴，密封效果好，可拆卸轴头，检修简便，使用寿命长等特点。凸键式气胀轴在分切、复合、印刷、涂布、制袋、造纸等机械收放卷中得到广泛应用，有效地提高了工作的效率和产品整体品质。
- 凸出的凸耳和一个特殊的橡胶膨胀软管。当空气被注入时，软管被膨胀，从而推动凸耳，从而使纸芯、塑料和铁管固定在一起。
- 气胀轴的直径可根据客户需求定制，通常直径为3"。

- The key type inflatable shaft is also known as the convex key type inflatable shaft. The main body of this kind of inflatable shaft is made of high-quality steel pipe, the surface is plated with hard chromium, and the aluminum convex key is flexible. It is equipped with high-quality rubber liner and fast filling and exhaust nozzle, which has the characteristics of good sealing effect, removable shaft head, simple maintenance, long service life, etc. The convex key inflatable shaft is widely used in mechanical reeling and unwinding of slitting, laminating, printing, coating, bag making, papermaking and so on, which effectively improves the work efficiency and the overall quality of products.
- Protruding lugs and a special rubber expansion hose. When air is injected, the hose is expanded to push the lug, so that the paper core, plastic and iron pipe are fixed together.
- The diameter of the inflatable shaft can be customized according to customer needs, usually 3".



卷筒标准型	未充气时轴外径	充气后轴块外径
1"	φ25	φ26-φ27
1 1/2"	φ27	φ41-φ43
2"	φ50	φ55-φ56
3"	φ74	φ79-φ81
6"	φ150	φ156-φ158



- 钢制键式气胀轴 /Steel key type air shaft



- 钢制键式气胀轴 /Steel key type air shaft



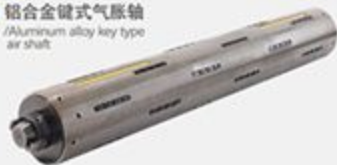
气胀轴展示

KEY TYPE AIR SHAFT
PRODUCT INTRODUCTION

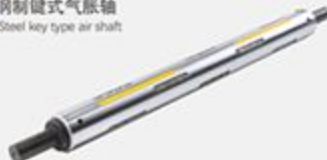
WWW.CHCZ.COM
浙江创得机械有限公司



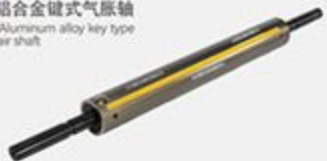
- 铝合金键式气胀轴 /Aluminum alloy key type air shaft



- 钢制键式气胀轴 /Steel key type air shaft



- 铝合金键式气胀轴 /Aluminum alloy key type air shaft



- 钢制键式方轴 /Steel keyed square shaft



通条气胀轴

THROUGH KEY AIR SHAFT

- 通条式气胀轴又称通键式气胀轴，通条式气胀轴每条胀条都设有单独气囊及气阀，所有如果有一个气囊损坏时，其他气囊仍保持充气状态，因此不需要停机，可在工作结束后，再更换气囊，效率较高。由于是通条式气胀轴适用于分切机复卷工作，充气时卷芯圆度最佳，胀条材质为橡胶，有良好的夹持弹性，以及良好的应对卷芯打滑情况。
- 通条式气胀轴在分切、复合、印刷、涂布、制袋、造纸等机械收放卷中得到广泛应用，有效地提高了工作效率和产品整体品质。
- 气胀轴的直径可根据客户需求定制，通常直径为3"。

- The through bar inflatable shaft is also known as the through key inflatable shaft. Each expansion bar of the through bar inflatable shaft is equipped with a separate air bag and air valve. If one air bag is damaged, the other air bags remain inflated, so there is no need to stop the machine. The air bag can be replaced after the work is completed, which is more efficient. As it is a full strip inflatable shaft, it is suitable for rewinding of slitting machine. When inflating, the core roundness is excellent. The key strip is made of rubber, which has good clamping elasticity and good response to core slipping.
- The through bar inflatable shaft is widely used in mechanical reeling and unreeling of slitting, laminating, printing, coating, bag making, papermaking and so on, which effectively improves the work efficiency and the overall quality of products.
- The diameter of the inflatable shaft can be customized according to customer needs, usually 3".



卷筒标准型	未充气时轴外径	充气后胀块外径
1"	φ25	φ26-φ27
1 ^{1/2} "	φ37	φ41-φ43
2"	φ50	φ55-φ56
3"	φ74	φ79-φ81
6"	φ150	φ156-φ158



■ 钢制通条气胀轴

/Steel through key air shaft



■ 铝合金通条气胀轴

/Aluminum alloy strip air shaft



气胀轴展示

THROUGH KEY AIR SHAFT
PRODUCT INTRODUCTION

WWW.CHCZ.COM
浙江创得机械有限公司

■ 铝合金通条气胀轴

/Aluminum alloy strip air shaft



■ 铝合金通条气胀轴

/Aluminum alloy strip air shaft



■ 钢制通条气胀轴

/Steel through key air shaft



■ 钢制通条气胀轴

/Steel through key air shaft



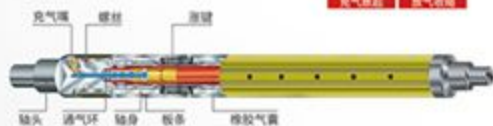
板条气胀轴

TILE TYPE AIR SHAFT

- 板条式气胀轴又称瓦片式气胀轴,采用铝合金板条,伸缩灵活;配置优质橡胶内胆与快速充气喷嘴,密封效果好,使用寿命长;可拆卸轴头,维护简便。
- 板条式气胀轴多数应用于分切精度高、幅宽窄的薄膜产品,适用于PP、PE、OP、复合纸、应用直径3"、6"。对于纸质薄卷芯,板条式气胀轴的轴体可以和卷芯内面全部接触固定,在气压变化时保持较好的真圆度,因此可减少纸管变形,且分切端面整齐。
- 气胀轴的直径可以根据收放卷材质的尺寸来定制,通常直径为3"。
- Slot type inflatable shaft, also known as tile type inflatable shaft, adopts aluminum alloy plates, with flexible expansion and contraction. Equipped with high-quality rubber liner and quick charging and exhausting air nozzle, it has good sealing effect and long service life. Removable shaft head, easy maintenance.
- Strip inflatable shafts are mostly used in film products with high slitting accuracy and narrow width, and are suitable for PP, PE, Op, composite paper, and application diameters of 3" and 6". For the paper thin roll core, the shaft body of the strip inflatable shaft can all contact and fix with the inner surface of the roll core, and maintain good roundness when the air pressure changes, so it can reduce the deformation of the paper tube, and the slitting end face is neat.
- The diameter of the inflatable shaft can be customized according to the size of the material of the reel, usually 3".



卷筒标准型	未充气时轴外径	充气后整体外径
3"	φ74	φ75.5-φ78
4"	φ99	φ101-φ102
5"	φ125	φ126-φ128
6"	φ150	φ151-φ153
8"	φ220	φ202-φ204
10"	φ250	φ252-φ256
12"	φ300	φ302-φ305



■ 三寸板条气胀轴
/Three inch tile air shaft



■ 六寸板条气胀轴
/Six inch tile air shaft



气胀轴展示

TILE TYPE AIR SHAFT
PRODUCT INTRODUCTION

WWW.CHCZ.COM
浙江创得机械有限公司

■ 三寸板条气胀轴
/Three inch tile air shaft



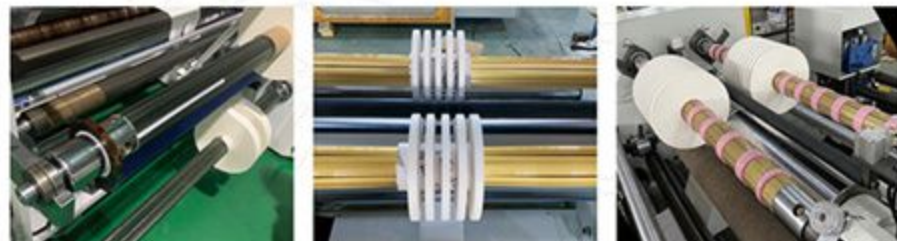
■ 四寸板条气胀轴
/Four inch tile air shaft



■ 三寸板条气胀轴
/Three inch tile air shaft



■ 三寸板条气胀轴
/Three inch tile air shaft



气胀套系列

PNEUMATIC SLEEVE



气胀套展示

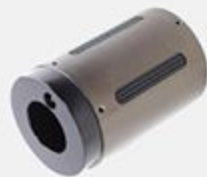
PNEUMATIC SLEEVE
PRODUCT DISPLAY

WWW.CHHCZ.COM
浙江创得机械有限公司



气胀套(气胀鼓)-气胀套也叫气胀套,或者气胀轴套。气胀套夹:用来配合3英寸气胀轴(直径为74或75的气胀轴)、3寸气胀轴套夹,可卷取纸管直径较大的原材料,能代替6寸气胀轴使用,可收卷放卷较大直径物品,适用性更高。

气胀套广泛应用于印刷机、分切机、贴合机、复卷机、分条机、覆膜机、制袋机等各式收卷传统产业。可适应各种特殊环境(无菌室、腐蚀性、高温环境),如生活科技、半导体业、化学等特殊产业。本公司可依客户需求定制各式尺寸长度气胀套,特殊材质及表面处理。



3转6键式气胀套 (230长)

3-inch to 6-inch key type inflatable sleeve (230mm)



3转6键式气胀套 (300长)

3-inch to 6-inch key type inflatable sleeve (300mm)



3转6键式气胀套 (330长)

3-inch to 6-inch key type inflatable sleeve (330mm)



3转4通条气胀套 (230长)

3-inch to 4-inch strip inflatable sleeve (230mm)



3转6通条气胀套 (300长)

3-inch to 4-inch strip inflatable sleeve (300mm)



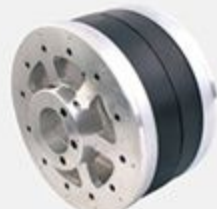
3转6气胀鼓 (230长)

3-inch to 6-inch inflatable drum (230mm)



3转8气胀鼓 (190长)

3 inch to 8 inch inflatable drum (190mm)



3转12气胀鼓 (190长)

3 inch to 12 inch inflatable drum (190mm)



3转12板条气胀套 (330长)

3 inch to 12 inch slot inflatable sleeve (330mm)

导辊系列

GUIDE ROLLER



导辊面纹理

GUIDE ROLLER SURFACE TEXTURE

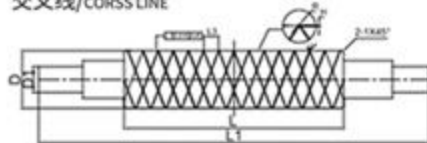
PRODUCT DISPLAY

WWW.CHHCZ.COM
浙江创得机械有限公司

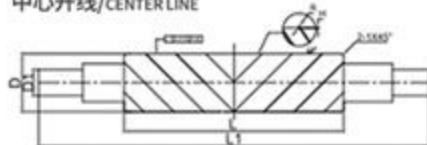


铝导辊也称铝合金导辊,是通过选用优质的铝合金材料,铝导辊具有强度高、阻力小、重量轻、转动灵活、不生锈、耐磨耐腐蚀,适用行业于印刷、包装、塑胶、电子电池。根据产业的不同需求,其表面还可特殊处理:抛砂、网纹、特氟龙及特别硬处理HV700,使其具有良好的耐刮、耐磨性。

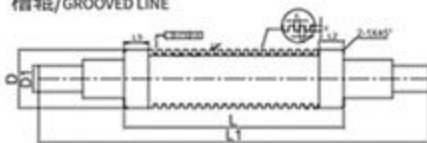
交叉线/CORSS LINE



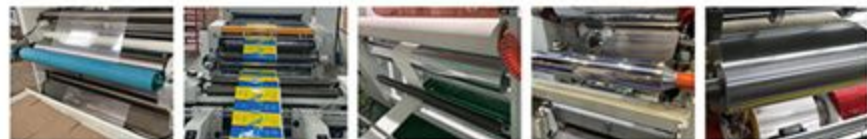
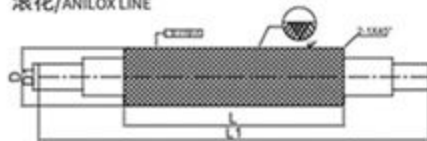
中心开线/CENTER LINE



槽辊/GROOVED LINE



滚花/ANILOX LINE



导辊种类

TYPE OF GUIDE ROLLER

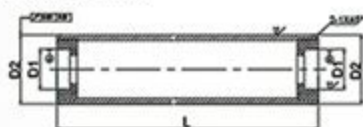
WWW.CHHCZ.COM
浙江创得机械有限公司



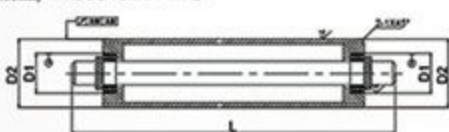
平管型/FLAT TUBE TYPE



无轴型/WITHOUT SHAFT TYPE



通轴型/THROUGH SHAFT TYPE



带轴型/SHAFT TYPE



阳极氧化HV300
银白色



阳极硬质氧化HV700
茶色



特氟龙/抗粘附防腐
绿色



镜面阳极硬质氧化
茶色

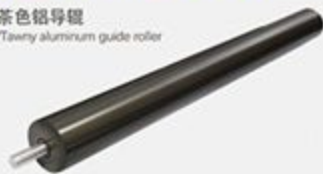
导辊展示

GUIDEROLLER
PRODUCT INTRODUCTION

WWW.CHHCZ.COM
浙江创得机械有限公司



■ 茶色铝导辊
/Teany aluminum guide roller



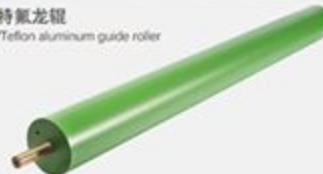
■ 镜面铝导辊
/Mirror aluminum guide roller



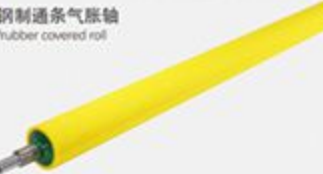
■ 网纹铝导辊
/Anlax aluminum guide roller



■ 特氟龙导辊
/Teflon aluminum guide roller



■ 钢制通气橡胶轴
/rubber covered roll



机械夹头系列

SAFETY COLLET



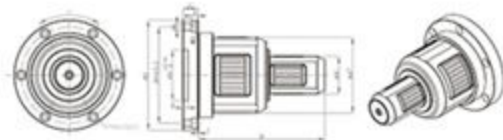
机械夹头

MECHANICAL CHUCK
PRODUCT DISPLAY

WWW.CHHCZ.COM
浙江创得机械有限公司

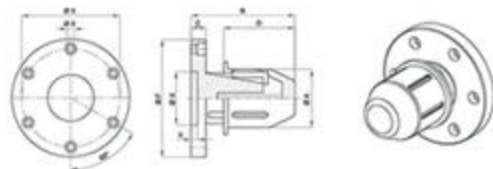


机械夹头主要分为3大类:倒推式机械夹头、旋转式机械夹头和气动式机械夹头。倒推时机械夹头工作原理,夹头受到侧向推力时,键条向外膨胀并压紧卷管,当推力解除时,键条自动回位。其优点,承载力强,不易松脱,不上卷管,节约时间。这款机械夹头是液压框架最适合的一款夹头,液压支撑移动物时,使扇形结构扩张固定卷管并自动对心,对卷管无损伤,多规格,高承重,免维护,寿命长,操作简单,减少繁重搬运而引起的风险。旋转时机械夹头,工作原理:夹头前缘面受到旋转力矩作用旋转一定角度,键条向外膨胀并压紧卷管,旋转力矩解除后,键条自动回位。其优点,承载力强,不易松脱,不上卷管,节约时间。广泛用于卷取和放料的各种机械上。此类机械夹头运用简单的滑动原理,使扇形结构扩张固定卷管并自动对心,这种夹头使得料管可多次重复使用,以减少料管损失。



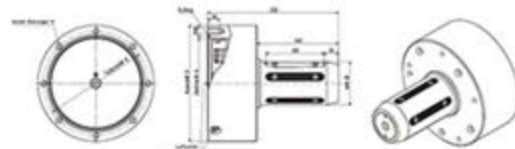
旋转式机械夹头/Rotary type mechanical chuck

规格型号 mm	A mm	B mm	C mm	D mm	最大膨胀量(mm) max expansion(mm)	最大负重(kg) max roll weight(kg)	扭矩(Nm) torque(Nm)	制造商备注 customer request
3"X	75/200	250	25	238	86.158	10000/25000	1250/2500	制造商备注 customer request
3"X	75/250	250	25	238	86.158	10000/45000	1250/5000	
4"X	100/250	250	25	238	109.579	25000/45000	2500/5000	



倒推式机械夹头/Side push type mechanical chuck

规格型号 mm	A mm	B mm	C mm	D mm	最大膨胀量(mm) max expansion(mm)	最大负重(kg) max roll weight(kg)	扭矩(Nm) torque(Nm)	制造商备注 customer request
2"X	75	245	20	240	84	10000	1250	制造商备注 customer request
3"X	90	245	25	238	107	25000	2500	
4"X	100	245	25	238	109	25000	2500	
5"X	125	245	25	238	134	35000	2500	
6"X	150	245	25	238	159	45000	5000	
8"X	200	245	30	238	212	120000	2000	



气动式机械夹头/Pneumatic mechanical chuck

规格型号 mm	A mm	B mm	C mm	D mm	最大膨胀量(mm) max expansion(mm)	最大负重(kg) max roll weight(kg)	扭矩(Nm) torque(Nm)	制造商备注 customer request
2"X	75	245	20	240	84	10000	1250	制造商备注 customer request
4"X	100	245	25	238	109	25000	2500	
5"X	125	245	25	238	134	35000	2500	
6"X	150	245	25	238	159	45000	5000	



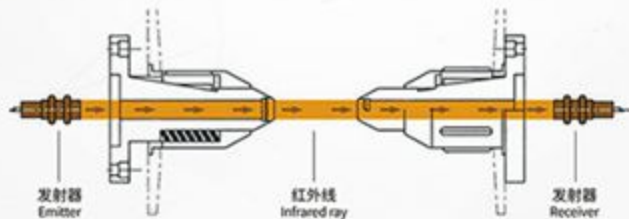
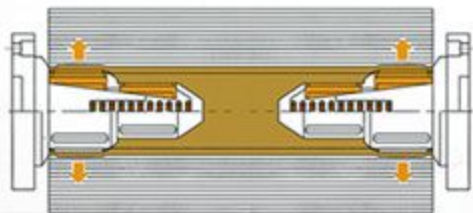
工作原理

WORKING PRINCIPLE

WWW.CHHCZ.COM
浙江创得机械有限公司



膨胀式原纸夹头，芯轴上套有导向套，导身套内腔内前端面与芯轴之间装有轴向复位弹簧，导向套侧壁在圆周方向上设有不少于三个径向导向孔，导向孔内动配合地嵌有滑块，滑块内侧端面对着芯轴侧壁上纵身设置的向前倾斜的斜面，使用原纸芯筒受力均匀，不易破损，而且使用操作方便。



带定心功能的自动膨胀式顶纸夹头 通过光电管进行卷料对中

机械夹头展示

MECHANICAL CHUCK
PRODUCT DISPLAY

WWW.CHHCZ.COM
浙江创得机械有限公司



6寸旋转式夹头
6-inch rotary collet



3转6寸旋转式夹头
3-turn 6-inch rotary collet



3转6寸旋转式夹头
3-turn 6-inch rotary collet



5寸气动式夹头
5-inch pneumatic chuck



3转4寸旋转式夹头
3-turn 4-inch rotary collet



6寸气动式夹头
6-inch pneumatic chuck



3转6寸气动式夹头
3-turn 6-inch pneumatic chuck



3寸侧推式夹头
3-inch side push collet



6寸侧推式夹头
6-inch side push collet